



# Virginia Healthcare Workforce Briefs

Indicators from the Bureau of Labor Statistics'  
Current Employment Statistics Survey  
**Series 2: Regional & Sectoral Employment**

Series 2, Issue 113

August 2021

## Inside this Brief:

Regional Employment	2
Regional Employment Growth	3
Subsector Employment	3
Subsector Employment Growth	4
Region Map	5
About the Data	6

## Highlights

- ◆ Data in this series are not seasonally adjusted and exhibit short-term volatility from fluctuations in holidays, weekends, weather and other seasonal factors. Estimates for the most recent month are preliminary.
- ◆ Northern Virginia was the only region in the state that increased Health Care & Social Assistance (HC&SA) employment during the month. In July, Northern Virginia's HC&SA sector created 900 new jobs, a gain that represents a one-month annualized employment growth rate of 8.3%. Richmond's HC&SA sector lost 1,100 jobs in July, while the Rest of Virginia saw HC&SA employment fall by 1,000 during the month. As for Hampton Roads, this region lost 200 HC&SA jobs in July.
- ◆ Ambulatory Health Care Services increased employment for the first time in three months as this HC&SA subsector created 1,200 new jobs in July. At the same time, Nursing & Residential Care Facilities enjoyed its third consecutive month of positive employment growth after creating 300 new jobs in July. On the other hand, Social Assistance lost 2,700 jobs in July, while employment in Hospitals fell by 200 during the month.

*Data in this report are not seasonally adjusted. Self-employed persons, including health professionals in private practice, are not included.*

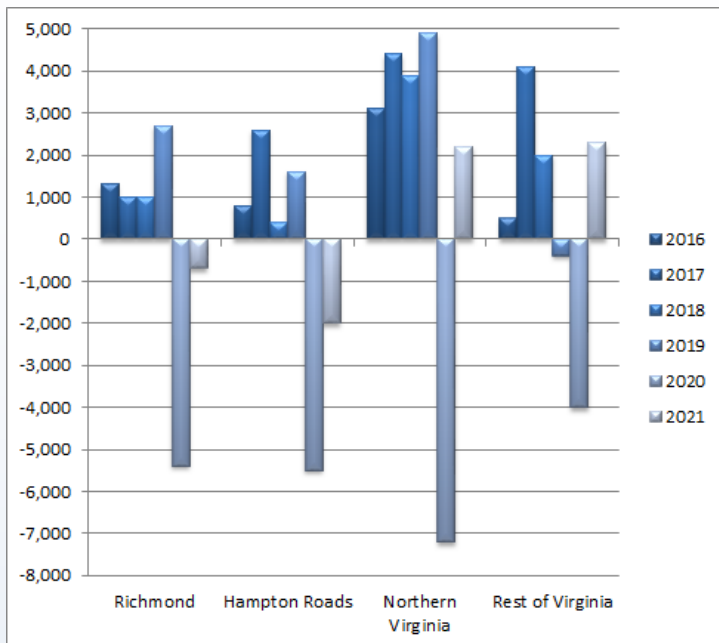
## Data in Brief

Not Seasonally Adjusted*	Employment, in Thousands				Growth Rate, Annualized		
	July 2020	Apr. 2021	June 2021	July 2021	12 Month	3 Month	1 Month
<b>Virginia</b>							
Total Nonfarm	3,765.2	3,897.5	3,929.6	3,912.2	3.9%	1.5%	-5.2%
Health Care & Social Assistance	431.8	443.9	445.3	443.9	2.8%	0.0%	-3.7%
<b>Hampton Roads</b>							
Total Nonfarm	743.0	760.6	773.5	771.0	3.8%	5.6%	-3.8%
Health Care & Social Assistance	91.2	90.4	90.3	90.1	-1.2%	-1.3%	-2.6%
<b>Northern Virginia</b>							
Total Nonfarm	1,408.8	1,467.1	1,486.7	1,469.9	4.3%	0.8%	-12.7%
Health Care & Social Assistance	129.3	136.7	135.0	135.9	5.1%	-2.3%	8.3%
<b>Richmond</b>							
Total Nonfarm	641.0	644.1	651.4	653.4	1.9%	5.9%	3.7%
Health Care & Social Assistance	82.7	82.1	84.0	82.9	0.2%	4.0%	-14.6%
<b>Rest of Virginia</b>							
Total Nonfarm	972.4	1,025.7	1,018.0	1,017.9	4.7%	-3.0%	-0.1%
Health Care & Social Assistance	128.6	134.7	136.0	135.0	5.0%	0.9%	-8.5%

Preliminary estimates are italicized

\*Seasonally adjusted data are adjusted by the Bureau of Labor Statistics to account for weather and other seasonal changes. Since the U.S. Bureau of Labor Statistics does not provide seasonally adjusted data at this level, this series uses **non**-seasonally adjusted data exclusively. Seasonal variation may account for some of the variation in time series data. When comparing data in this series to other HWDC series or other publications it is important to note whether the data reported have been seasonally adjusted.

### Regional HC&SA Employment Growth, Level



**Figure 1: Annual & YTD Change in HC&SA Regional Employment (Not Seasonally Adjusted, Full-Year Change for 2016-2020, Year-to-Date Change for 2021).**

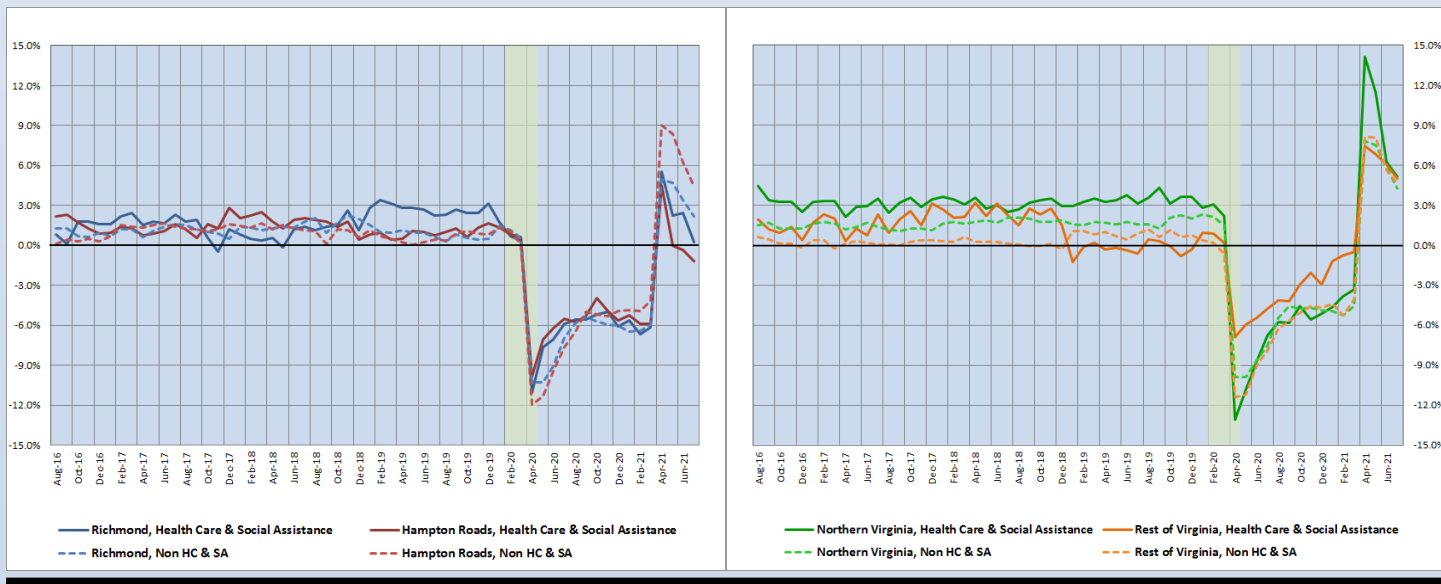
According to the preliminary data released on Friday, August 20, 2021, by the U.S. Department of Labor, Bureau of Labor Statistics, Northern Virginia was the only region in the state that increased Health Care & Social Assistance (HC&SA) employment during the month. In July, Northern Virginia’s HC&SA sector created 900 new jobs, a gain that represents a one-month annualized employment growth rate of 8.3%. Although this month’s employment gain was not enough to completely reverse the loss of 2,500 HC&SA jobs in June, Northern Virginia has still enjoyed strong HC&SA employment growth in 2021. So far this year, Northern Virginia’s HC&SA sector has created 2,200 jobs.

Only the Rest of Virginia has added more HC&SA jobs to the state’s economy so far this year. Even after losing 1,000 HC&SA jobs in July, this region has still increased HC&SA employment by 2,300 in 2021. Meanwhile, Richmond’s HC&SA sector also had a difficult month as this region lost 1,100 HC&SA jobs in July. Finally, Hampton Roads saw HC&SA employment fall by 200 during the month.

### Year-Over-Year Regional Employment Growth

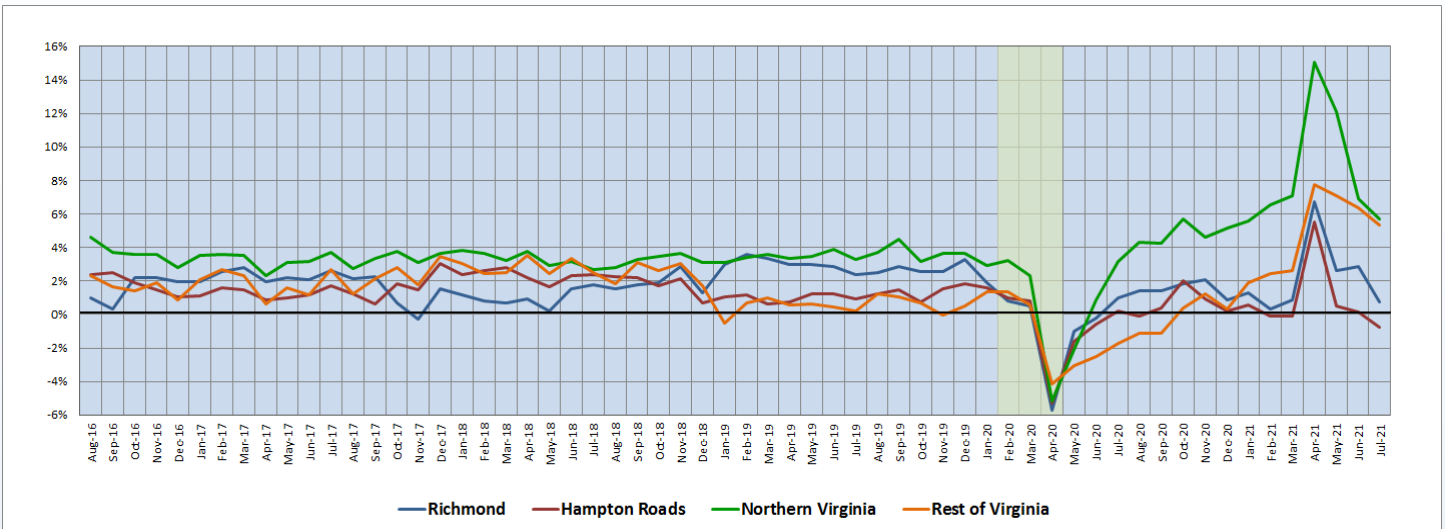
Although Northern Virginia’s HC&SA sector saw its year-over-year employment growth rate fall from 6.22% to 5.10% in July, this region still retains the highest growth rate in the state. However, the comparable growth rate for the Rest of Virginia is not far behind. Regardless, the Rest of Virginia’s year-over-year HC&SA employment growth rate fell from 6.08% to 4.98% in July. Richmond’s HC&SA sector also experienced a decline in its own year-over-year employment growth rate, which fell from 2.44% to 0.24% during the month. Likewise, Hampton Roads saw its year-over-year HC&SA employment growth rate fall from -0.33% to -1.21% in July.

**Figure 2: Year-Over-Year Employment Growth (Not Seasonally Adjusted).**



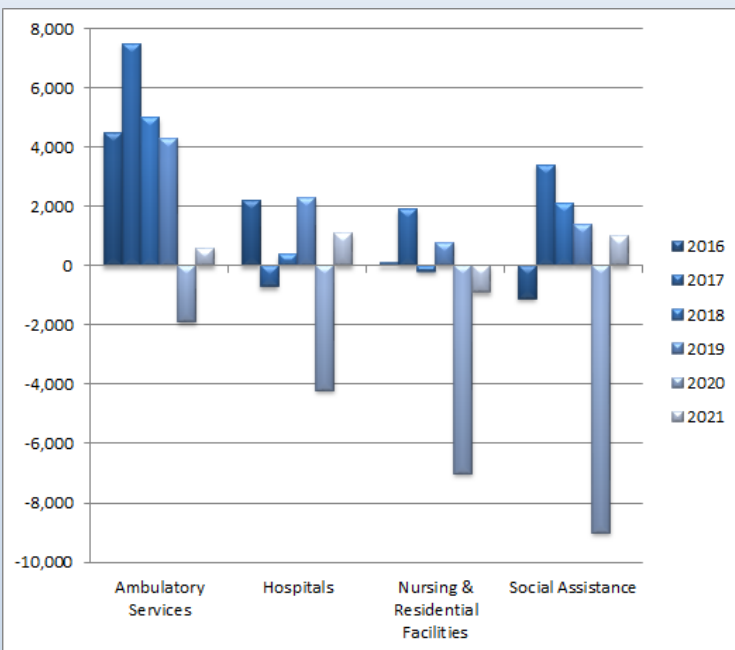
## 12-Month Average Employment Growth by Region

**Figure 3: 12-Month Moving Average, HC&SA Regional Employment Growth Rate (Not Seasonally Adjusted).**



Every region in Virginia saw its four-quarter HC&SA employment growth rate moving average decline in July. Northern Virginia’s HC&SA sector experienced a decline in its four-quarter employment growth rate moving average from 6.92% to 5.70% during the month. In fact, this moving average has fallen by nearly two-thirds since reaching a multiyear high of 15.06% in April. Regardless, Northern Virginia continues to enjoy the highest four-quarter HC&SA employment growth rate moving average in the state. Meanwhile, the Rest of Virginia saw its four-quarter HC&SA employment growth rate moving average fall from 6.37% to 5.34% in July, while Richmond’s comparable moving average fell from 2.88% to 0.77%. At the same time, Hampton Roads saw its moving average turn negative after falling from 0.14% to -0.77%.

## Subsector Employment Growth



**Figure 4: Annual & YTD Change in HC&SA Subsector Employment (Not Seasonally Adjusted, Full-Year Change for 2016-2020, Year-to-Date Change for 2021).**

After a strong start to the new year in Q1 2021, Ambulatory Health Care Services experienced a significant decline in employment in Q2 2021. However, Ambulatory Health Care Services has begun the second half of the year on a strong note as this HC&SA subsector created 1,200 new jobs in July. This increase represents the largest monthly employment gain in Ambulatory Health Care Services so far in 2021. With this month’s gain, Ambulatory Health Care Service has increased employment by 600 so far this year.

Nursing & Residential Care Facilities also enjoyed positive employment growth in July with the creation of 300 new jobs during the month. With this gain, this HC&SA subsector has increased employment in each of the past three months. Social Assistance experienced a decline in employment for the first time in six months after losing 2,700 jobs in July, while Hospitals lost 200 jobs during the month. Regardless, these two HC&SA subsectors have still created 1,000 and 1,100 jobs, respectively, so far this year.

### Distribution of Growth by Subsector

Not Seasonally Adjusted	Employment, in Thousands				Growth Rate, Annualized		
	July 2020	Apr. 2021	June 2021	July 2021	12 Month	3 Month	1 Month
<b>Virginia</b>							
Health Care & Social Assistance	431.8	443.9	445.3	443.9	2.8%	0.0%	-3.7%
<i>Ambulatory Health Care Services</i>	184.7	193.4	190.5	191.7	3.8%	-3.5%	7.8%
<i>Hospitals</i>	104.5	104.1	105.5	105.3	0.8%	4.7%	-2.3%
<i>Nursing &amp; Residential Care Facilities</i>	72.0	69.9	70.6	70.9	-1.5%	5.8%	5.2%
<i>Social Assistance</i>	70.6	76.5	78.7	76.0	7.6%	-2.6%	-34.2%
<b>Hampton Roads</b>							
Health Care & Social Assistance	91.2	90.4	90.3	90.1	-1.2%	-1.3%	-2.6%
<i>Hospitals</i>	21.4	21.2	21.4	21.4	0.0%	3.8%	0.0%
<b>Northern Virginia</b>							
Health Care & Social Assistance	129.3	136.7	135.0	135.9	5.1%	-2.3%	8.3%
<i>Ambulatory Health Care Services</i>	65.4	70.0	67.1	68.7	5.0%	-7.2%	32.7%
<i>Hospitals</i>	25.7	26.1	26.3	26.2	1.9%	1.5%	-4.5%

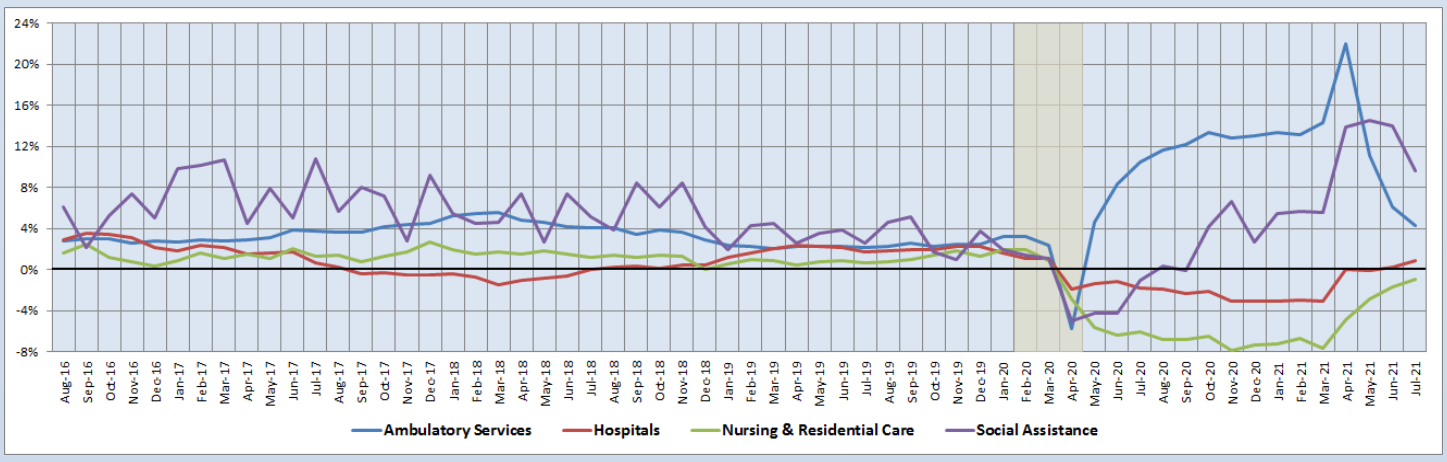
Preliminary estimates are italicized

Although Social Assistance saw employment fall at a 34.2% annualized rate in July, this HC&SA subsector still enjoys the strongest long-term employment growth in the state. Over the past 12 month, employment in Social Assistance has grown by 7.6%. This growth rate is nearly triple the comparable 2.8% growth rate for Virginia’s HC&SA sector as a whole. Ambulatory Health Care Services are also enjoying strong long-term job growth thanks to its 12-month employment growth rate of 3.8%. Meanwhile, both Nursing & Residential Care Facilities and Hospitals have strong three-month annualized employment growth rates of 5.8% and 4.7%, respectively.

### 12-Month Average Employment Growth by Subsector

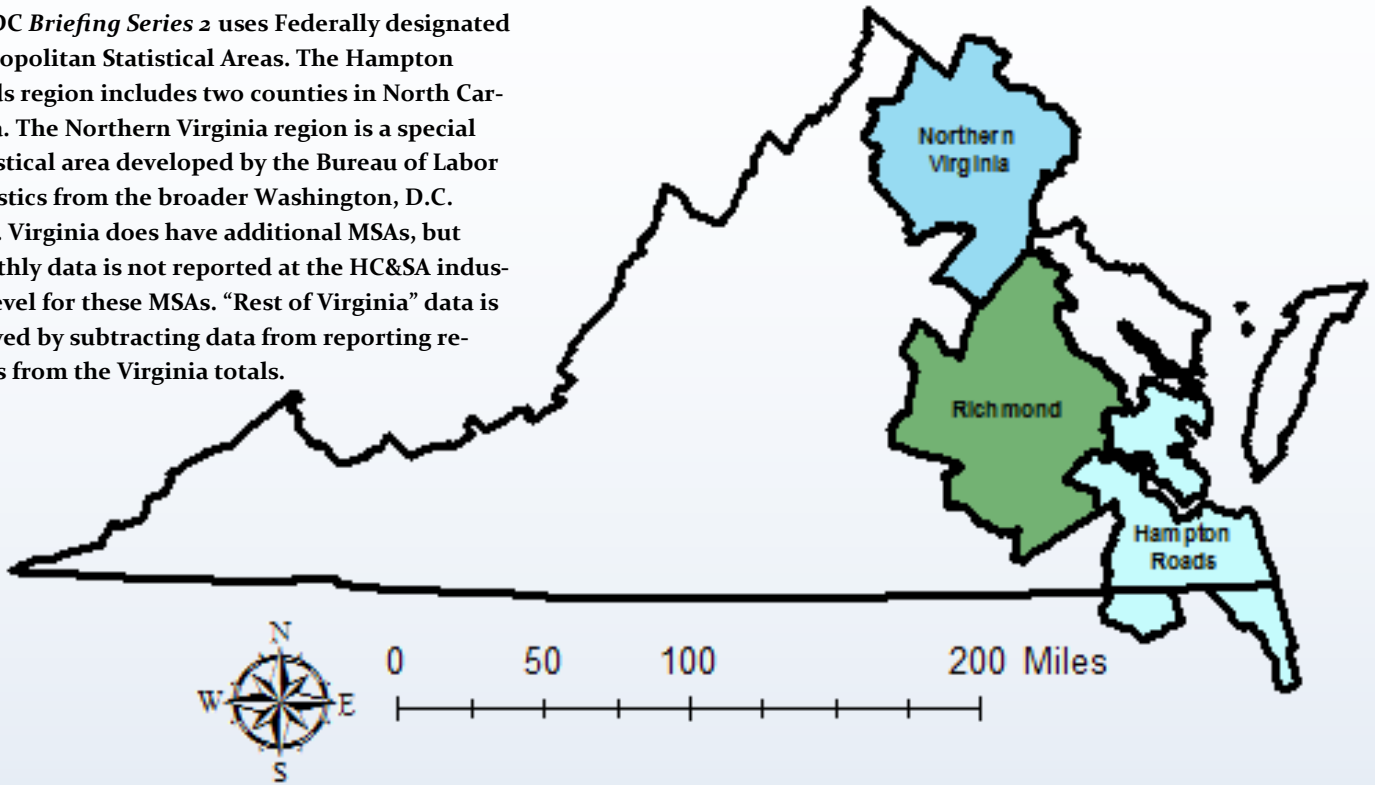
Although Social Assistance and Ambulatory Health Care Services retain the two highest 12-month employment growth rate moving averages in the state, both of these moving averages declined in July. Social Assistance experienced a decline in its 12-month employment growth rate moving average from 14.04% to 9.63%, while Ambulatory Health Care Services saw its moving average fall from 6.11% to 4.26%. On the other hand, both Hospitals and Nursing & Residential Care Facilities saw their moving averages increase during the month. In fact, both of these HC&SA subsectors saw their respective 12-month employment growth rate moving averages reach year-to-date highs of 0.86% and -0.93% in July.

**Figure 5: 12-Month Moving Average, HC&SA Subsector Employment Growth Rate (Not Seasonally Adjusted).**



### Region Map

HWDC *Briefing Series 2* uses Federally designated Metropolitan Statistical Areas. The Hampton Roads region includes two counties in North Carolina. The Northern Virginia region is a special statistical area developed by the Bureau of Labor Statistics from the broader Washington, D.C. MSA. Virginia does have additional MSAs, but monthly data is not reported at the HC&SA industry level for these MSAs. “Rest of Virginia” data is derived by subtracting data from reporting regions from the Virginia totals.



### Region Detail

Northern Virginia		Richmond		Hampton Roads	
<i>Northern VA, (Non-standard CES Area 94783)</i>		<i>Richmond, VA (MSA 40060)</i>		<i>Virginia Beach-Norfolk-Newport News, VA-NC (MSA 47260)</i>	
<b>Counties:</b>	<b>Cities:</b>	<b>Counties:</b>	<b>Cities:</b>	<b>Counties:</b>	<b>Cities:</b>
Arlington	Alexandria	Amelia	Colonial Heights	Gloucester	Chesapeake
Clarke	Fairfax	Caroline	Hopewell	Isle of Wight	Hampton
Culpeper	Falls Church	Charles City	Petersburg	James City	Newport News
Fairfax	Fredericksburg	Chesterfield	Richmond	Mathews	Norfolk
Fauquier	Manassas	Dinwiddie		Surry	Poquoson
Loudoun	Manassas Park	Goochland		York	Portsmouth
Prince William		Hanover			Suffolk
Rappahannock		Henrico		<i>Currituck, NC</i>	Virginia Beach
Spotsylvania		King William		<i>Gates, NC</i>	Williamsburg
Stafford		New Kent			
Warren		Powhatan			
		Prince George			
		Sussex			



Healthcare Workforce  
Data Center

Perimeter Center  
9960 Mayland Drive, Suite 300  
Henrico, VA 23233-1463

Phone: (804) 597-4213  
Fax: (804) 527-4434  
E-mail: [hwdc@dhp.virginia.gov](mailto:hwdc@dhp.virginia.gov)  
Website: [www.dhp.virginia.gov/PublicResources/HealthcareWorkforceDataCenter](http://www.dhp.virginia.gov/PublicResources/HealthcareWorkforceDataCenter)

*HWDC Staff:*

Elizabeth Carter, PhD <i>Executive Director</i>	Yetty Shobo, PhD <i>Deputy Director</i>
Rajana Siva, MBA <i>Data Analyst</i>	Christopher Coyle <i>Research Assistant</i>

The Department of Health Professions Healthcare Workforce Data Center works to improve the data collection and measurement of Virginia's healthcare workforce through regular assessment of workforce supply and demand issues among the 80 professions and 350,000 practitioners licensed in Virginia by DHP.

The HWDC collects data on Virginia's licensed health professionals through surveys completed during the online license renewal and application process. Survey results and data may be accessed on our website: [www.dhp.virginia.gov/PublicResources/HealthcareWorkforceDataCenter/](http://www.dhp.virginia.gov/PublicResources/HealthcareWorkforceDataCenter/).

The HWDC also provides a series of Virginia Healthcare Workforce Briefs based data collected by the U.S. Department of Labor's Bureau of Labor Statistics and the U.S. Department of Commerce' Bureau of Economic Analysis.

Virginia Healthcare Workforce Briefs:

Series 1: State & National Employment (Monthly)

Series 2: Virginia Regional Employment (Monthly)

Series 3: Income & Compensation (Quarterly)

Follow us on. . .

Tumblr: <http://vahwdc.tumblr.com/>

### About the Data

Data in this report are from the U.S. Department of Labor Bureau of Labor Statistics' Current Employment Statistics program. The CES program surveys about 143,000 businesses and government agencies monthly. Unless otherwise noted, this series uses data that are not seasonally adjusted. Seasonal variations related to weather, holidays, weekends, seasons and other predictable variations are apparent in the data. Short-term changes may be related to seasonal changes rather than underlying trends. Data from recent months is preliminary and subject to revision in future releases from the CES. Revisions will be reported in future editions of this series. Unless otherwise noted, the CES data presented in this series:

**Includes:**

- ◆ Data on employed individuals drawing a paycheck (payroll employees).
- ◆ All employees, regardless of role, occupation or hours worked.
- ◆ HC&SA employees in the private sector only.
- ◆ Persons employed by health professionals in private practice.
- ◆ Both government and private sector workers in nonfarm employment data.

**Does not include:**

- ◆ Self-employed workers or volunteers, including health professionals in private practice.
- ◆ HC&SA employees in the public sector. (These are counted as government workers in monthly reports).
- ◆ Information on hours worked or the quality of employment.
- ◆ Government workers in HC&SA level data. (Government workers, regardless of occupation and role, are classified as public sector employees).